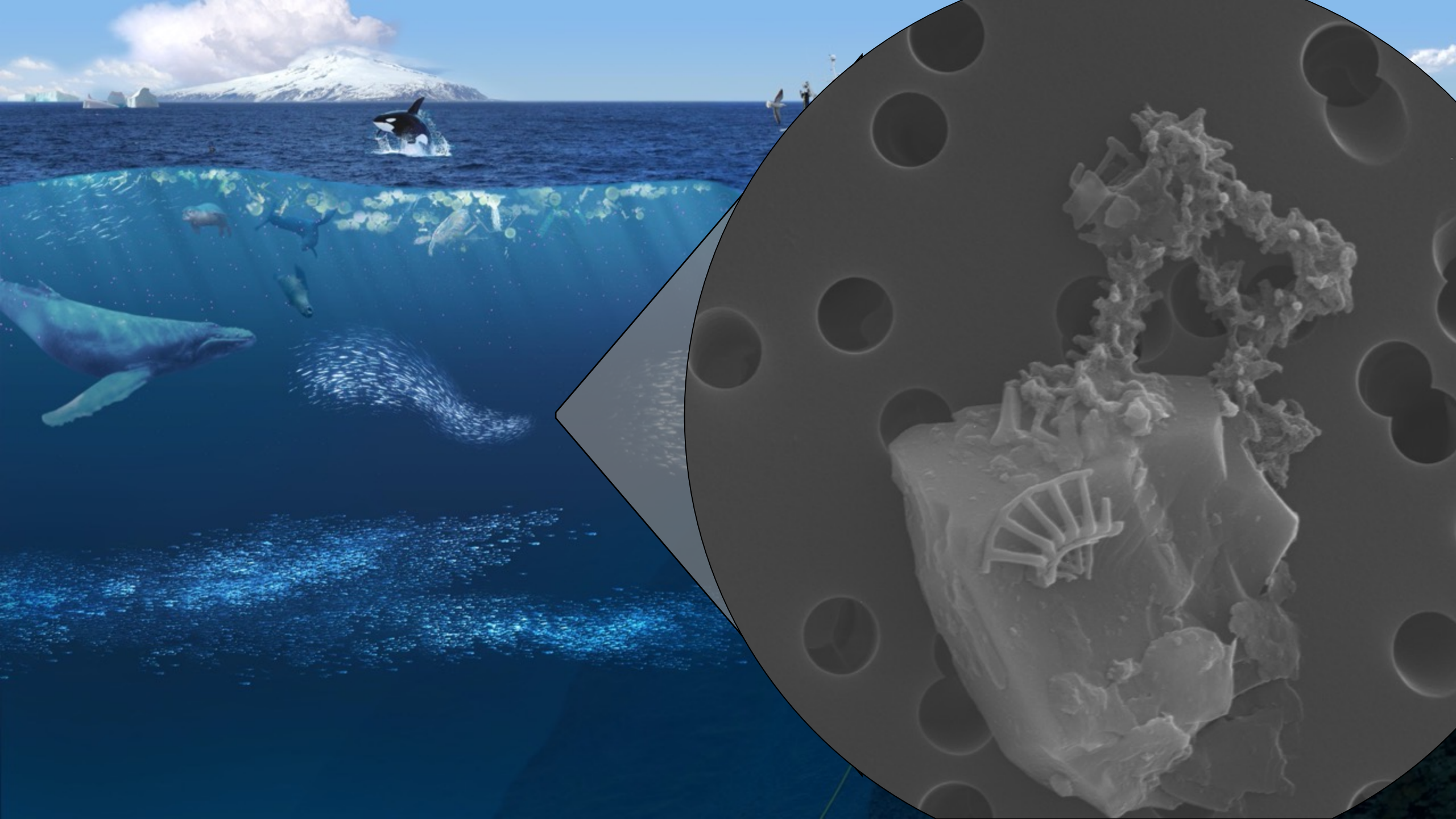


Marine nanoparticles

Implications of nanoparticles on the marine environment

PhD project, Are Bruvold



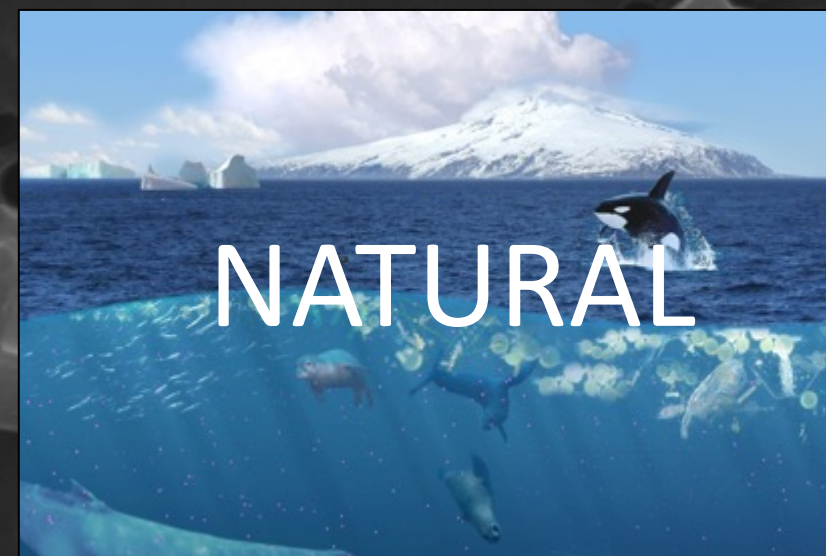




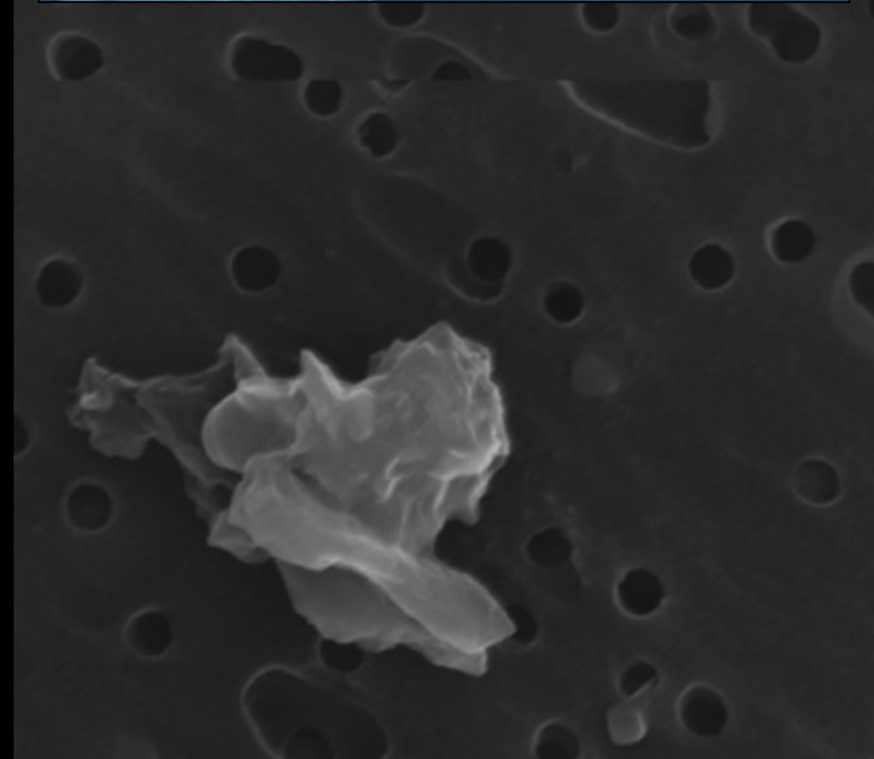
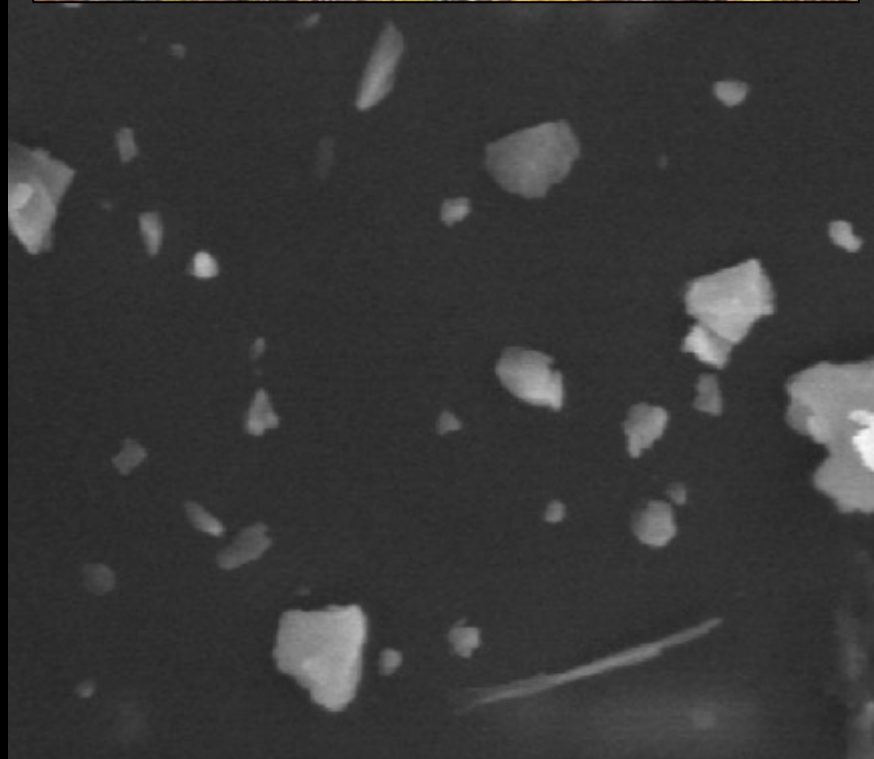
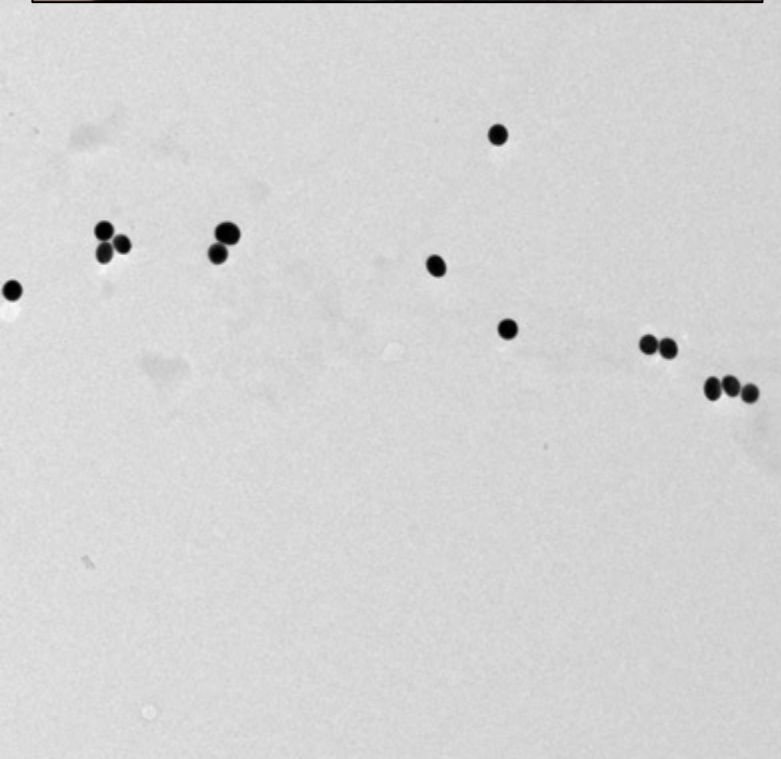
ENGINEERED



INCIDENTAL



NATURAL

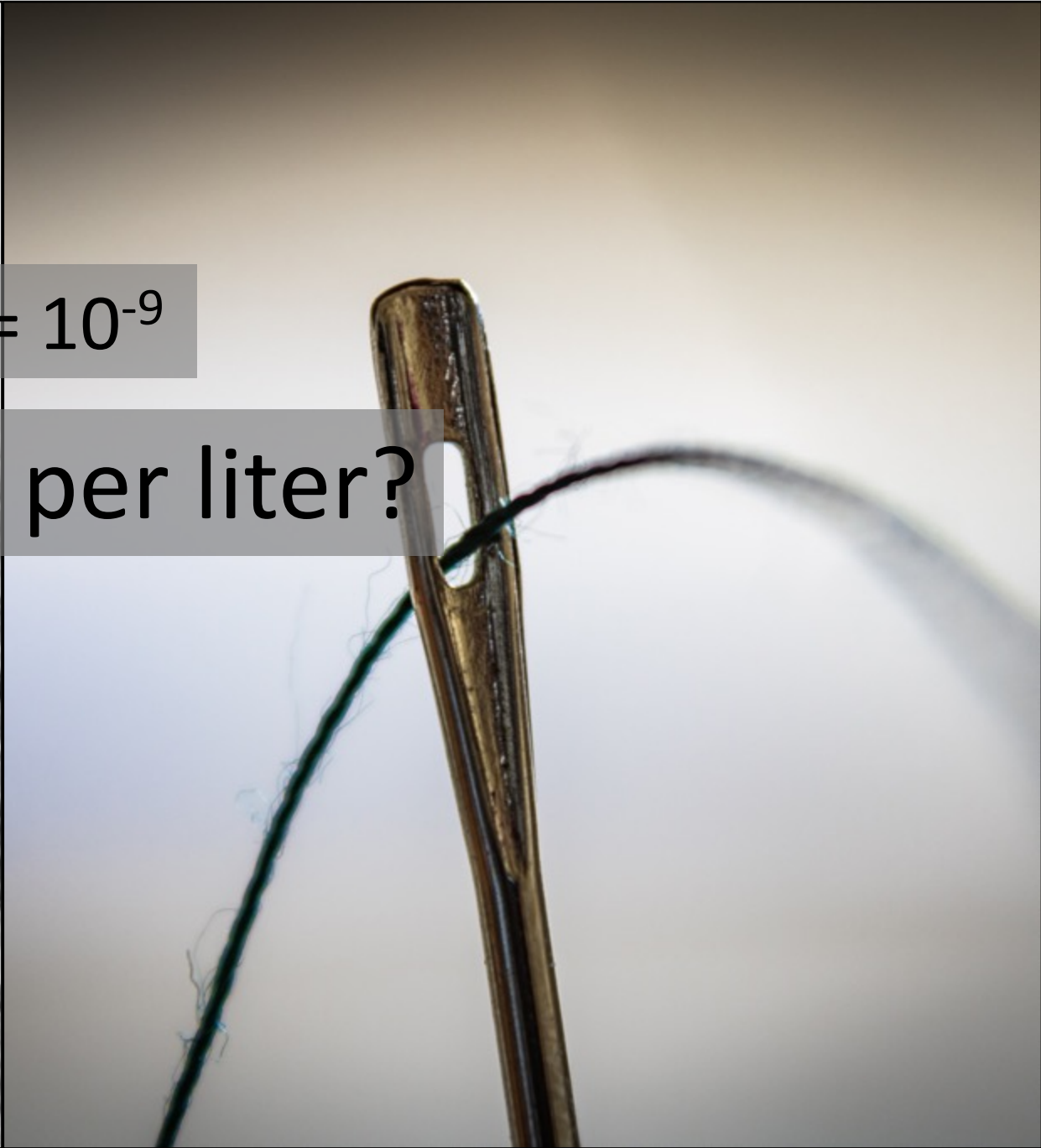


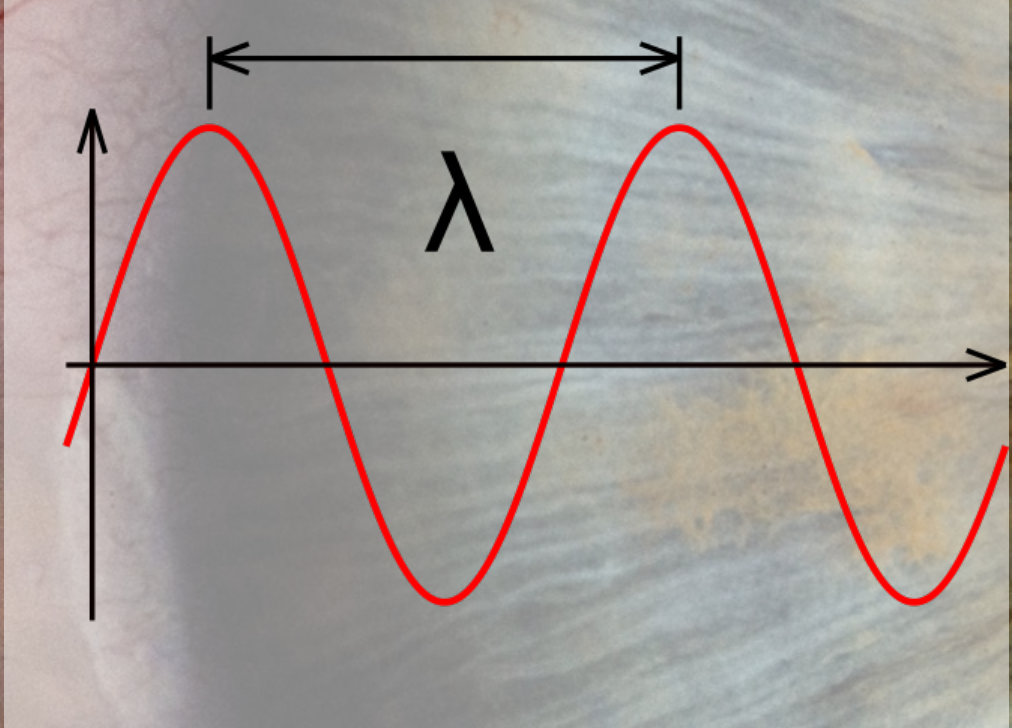
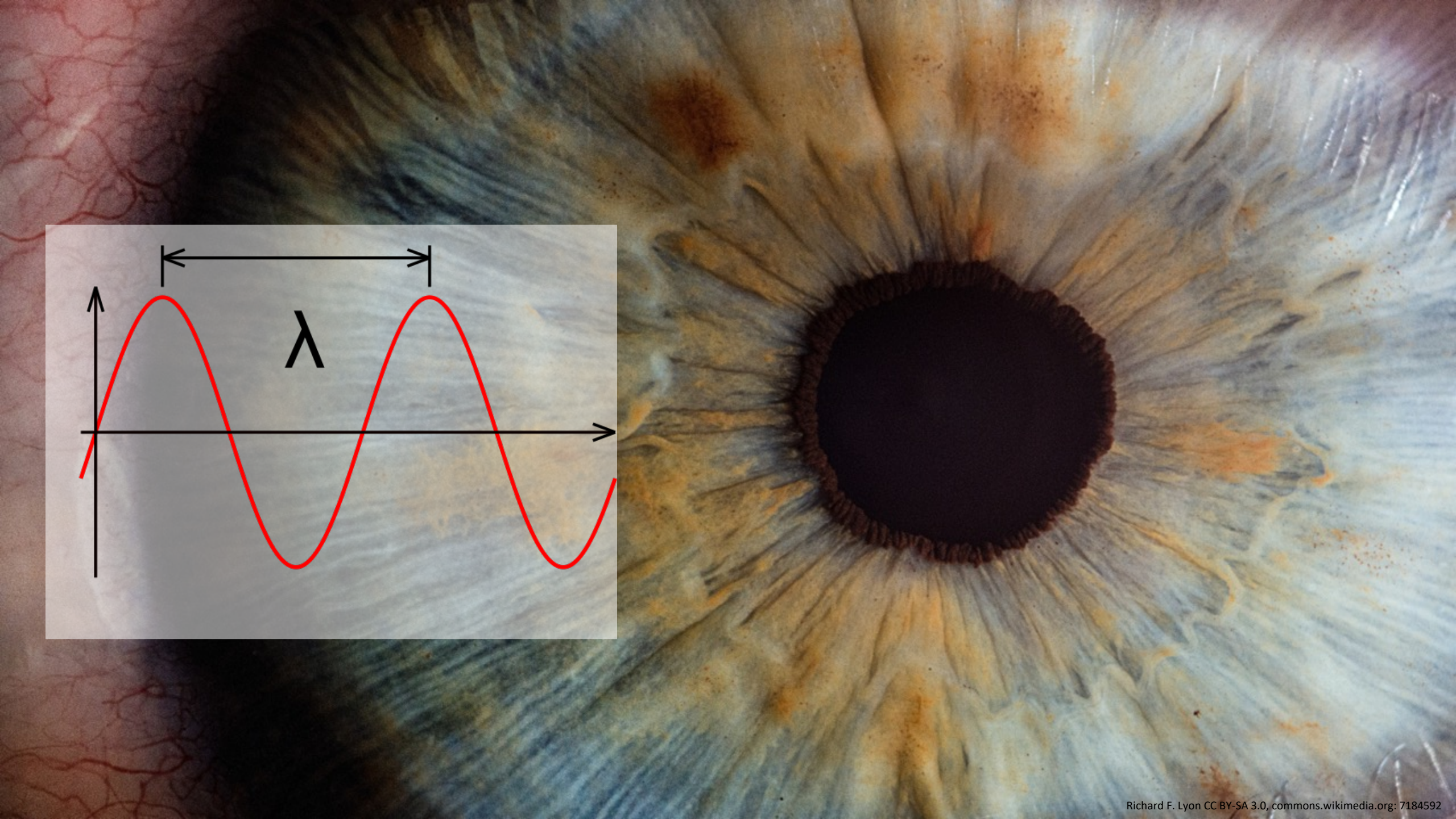
1 μm 



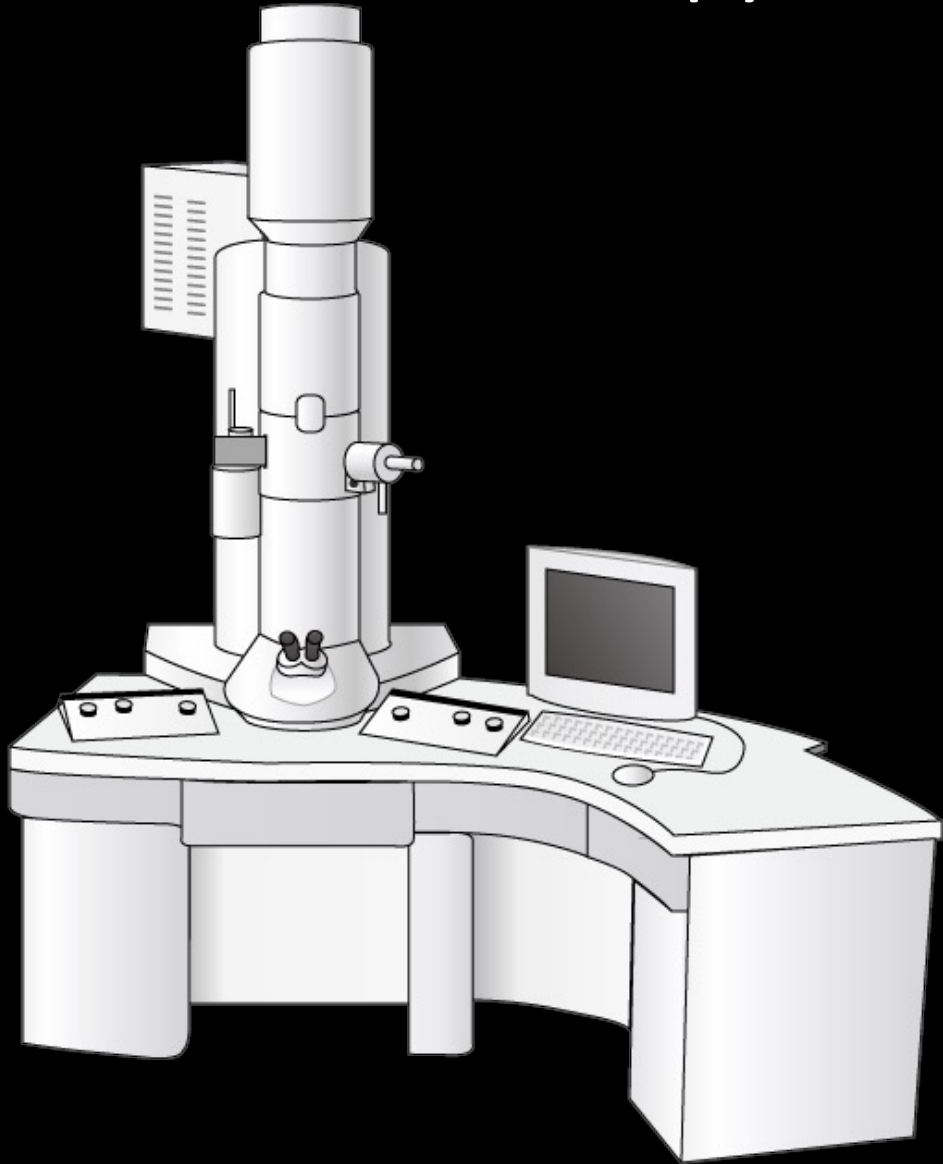
Nano = 10^{-9}

Nanogram per liter?

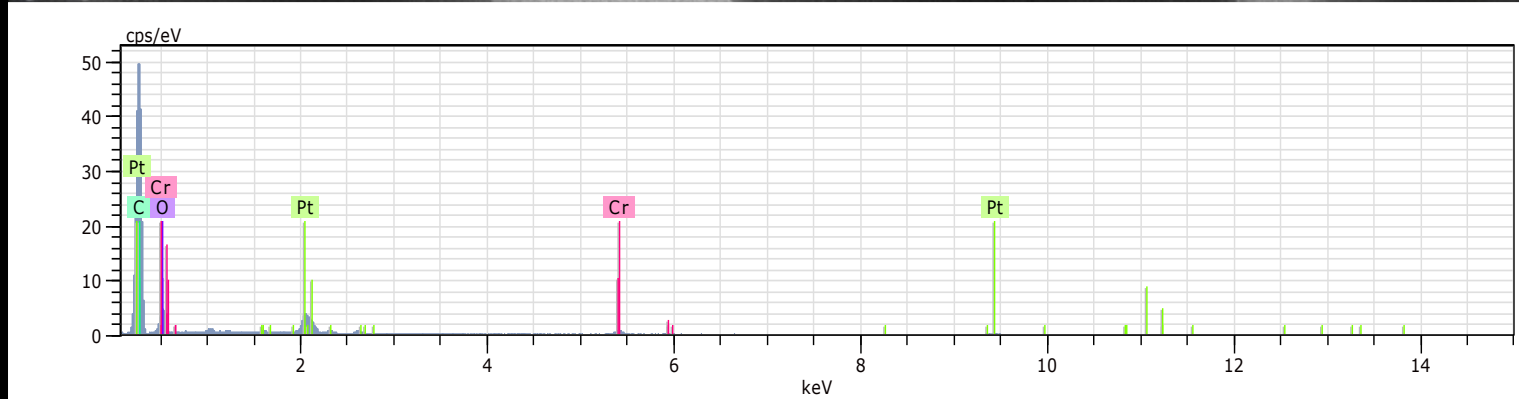
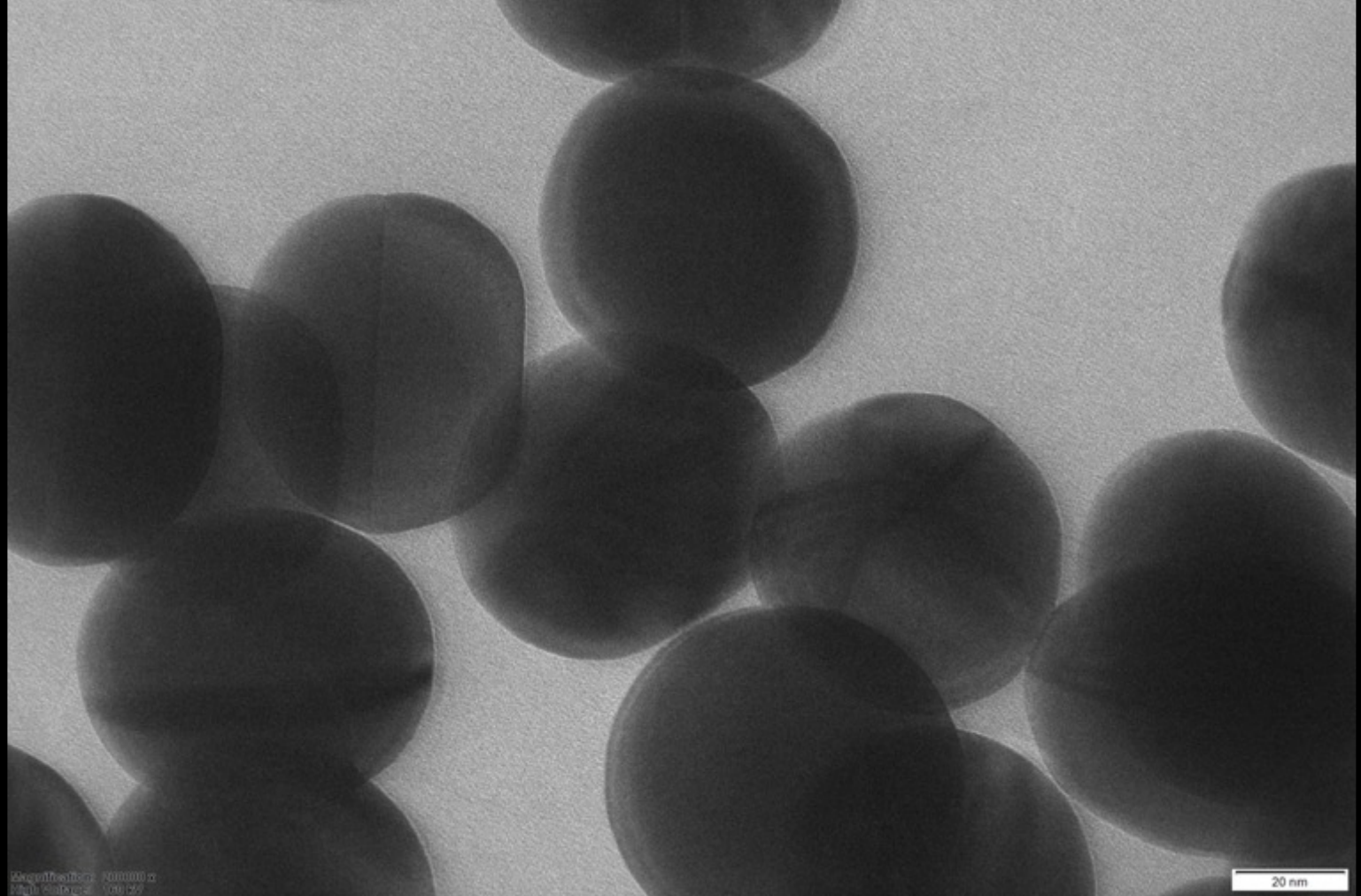




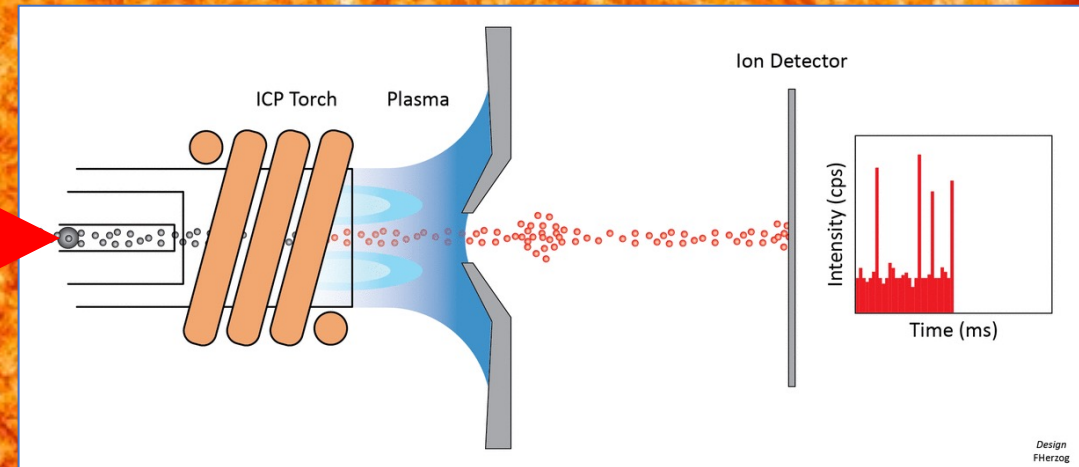
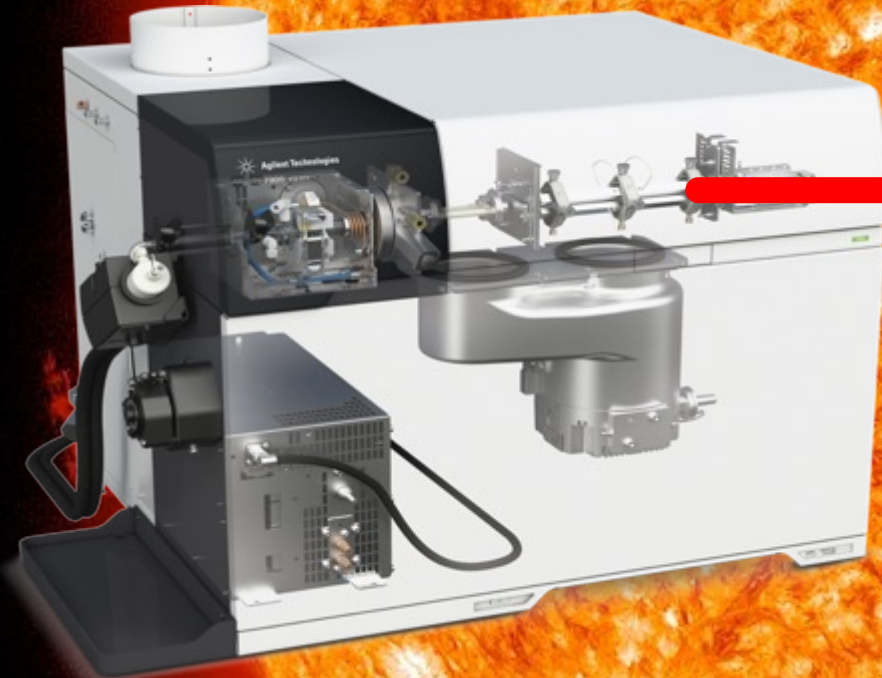
Electron microscopy



EM illustration by Database Center for Life Science (DBCLS)



single particle-ICP-MS



from [www.webdepot.umontreal.ca/Users/wilkins/Monde2014/ICP/single-particle-inductively-coupled-plasma-mass-spectrometry-\(sp-icpms\).html](http://www.webdepot.umontreal.ca/Users/wilkins/Monde2014/ICP/single-particle-inductively-coupled-plasma-mass-spectrometry-(sp-icpms).html)

Adapted from www.agilent.com/cs/library/letters/public/7900_ICP-MS_wall_poster_v03.pdf

